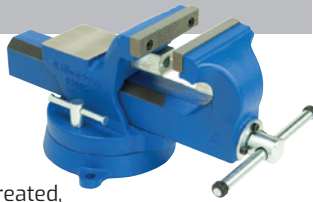


# Ken-Tool® Bench Vises

## INDUSTRIAL DUTY

- 360° Swivel Base • Built-In Anvils
- Machined Base Plate for Smooth Swivel
- Heavy-Duty Jaw Beam Covers Screw
- "V" Notched, Replaceable/Reversible Jaws made of Carbon Steel & Heat-Treated, Diamond Cut on 1 Side, Smooth on the other
- Gear-Type Locking System with Double-Lock Down Bolts



**KT63004** USER \$342.58 SRP **\$265.05**

4" Jaw Width, 5" Jaw Opening, 2.9" Throat Depth, 1/2" - 2" Pipe Jaw Capacity

**KT63006** USER \$587.55 SRP **\$454.58**

6" Jaw Width, 8" Jaw Opening, 3.6" Throat Depth, 3/4" - 3.5" Pipe Jaw Capacity

**KT63008** USER \$768.98 SRP **\$594.95**

8" Jaw Width, 9" Jaw Opening, 4.5" Throat Depth, 3/4" - 4" Pipe Jaw Capacity

## PROFESSIONAL

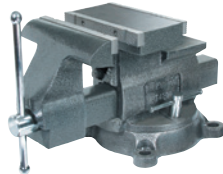
### Reversible Mechanic's

- 2 Built-In Anvils
- Remove Jaw from Front of Base, Swivel Base 180°, then Re-Insert Jaw

**KT64800** (KT4800) 8"

- 11-14" Jaw Opening, 4 7/8" Throat Depth

USER \$747.16 SRP **\$491.95**



**KT64650** (KT4650) 6 1/2" USER \$586.14 SRP **\$377.81**

- 9-12" Jaw Opening, 4" Throat Depth

**KT65005** 5" Multipurpose

- 360° Swivel Base • Built-In Anvils
- 5" Jaw Opening, 2 1/2" Throat Depth

USER \$323.11 SRP **\$249.98**



## KT39743 MacPherson Strut Vise/Chain Wrench/Rack & Pinion Vise

- Easily Mounts to any Work Bench

USER \$111.05 SRP **\$98.25**



LTD QTY

## C-CLAMPS

**KT39604** (KT-4)

4" Jaw Opening, 2 1/16" Depth, 5/8" Screw

USER \$32.51 SRP **\$25.72**



**KT39606** (KT-6) USER \$47.82 SRP **\$37.82**

6" Jaw Opening, 2 3/4" Depth, 5/8" Screw Diameter

**KT39608** (KT-8) USER \$60.16 SRP **\$47.58**

8" Jaw Opening, 3 1/4" Depth, 3/4" Screw Diameter

**KT42493** (143K) SRP **\$6.77**

BRINK & COTTON® Carriage

3" Jaw Opening, 2" Depth, 7/16" Screw Diameter

LTD QTY

## KT29980 reCore® TPMS Sensor Saver System

- Includes: 12 TPMS reCore Sensor Savers, TPMS Valve Core Torque Tool (Preset at 4 IN-LBS), High Speed Dual Cutter Countersink Drill Bit, Precision Tap, Tap Holder with T-Handle, Bottle Ken-Lok™ Thread Sealant, Instructions & Case



USER \$297.27 SRP **\$235.11**

## KT29999 VALVECAPPER® Pro Cap & Core Tool

- Designed for Use on Metal & Plastic Valve Caps • 11 3/4"

USER \$16.97 SRP **\$13.40**



## KT35442 Blue Cobra® Truck Tire Service Set

- Most 22.5" & 24.5" Tubeless Tires
- Includes: **KT35440** 54" Blue Cobra® Truck Tire Demount Tool; **KT34645C** T45AC 37" Classic™ Tubeless Tire Iron; **KT33052** 30" Double-End Tire Spoon; **KT35848** 8LB Bucket White Paste Lube; **KT30512** 12" Euro-Style Lube Applicator Brush; **KT31713** 5.5" Aluminum C-Lok™ Bead Holder; **KT31810** 6" Leather Rim Protector



USER \$847.61 SRP **\$670.35**

## AUTO & TRUCK TIRE TOOLS

**KT20145**

### 5 11/16" Air-Flexx Valve Extension, Inner Dual Tires

USER \$15.29 SRP **\$12.11**



**KT33220** (T20A)

### 30" Curved Tire Mount/Demount Spoon

USER \$50.94 SRP **\$40.30**



### 37" Tubeless Tire Irons

**KT34644** (T45A-2000K™) USER \$124.16 SRP **\$98.21**

**KT34645** (T45A®) USER \$107.98 SRP **\$85.40**



**KT35429** (TG11E)

### Duck-Billed Bead Breaking Wedge, 32" Fiberglass Handled

USER \$224.17 SRP **\$177.30**



### 4-Way Lug Wrenches

**KT35595** USER \$177.88 SRP **\$140.68**

(TC95) Heavy Duty - Truck 1 1/2", 1 3/16" Square Sockets; 27 1/2"L

**KT35658** (T59A) Standard - Passenger 3/4", 1 3/16", 7/8", 1/2" Sq Service Arm; 18"L

**KT35620** (T9520) Economy - Passenger 3/4", 1 3/16", 7/8", 17MM; 20"L